



INSTRUCTION BULLETIN

No. 340205
Machine: ATLV 4300
Published: 6-01/00
System: SWEEPING

NOTE: DO NOT DISCARD the Parts List from the Instruction Bulletin. Place the Parts List in the appropriate place in your machine manual for future reference. Retaining the Parts List will make it easier to reorder individual parts and will save you the cost of ordering an entire kit.

NOTE: Numbers in parenthesis () are reference numbers for parts listed in Bill of Materials.

Installation instructions for kit number 368105

SYNOPSIS / PROBLEM:

This kit contains the parts needed to install a plenum brace kit on the model ATLV 4300 Litter Vacuum.

Please follow step-by-step instructions.

SPECIAL TOOLS / CONSIDERATIONS: Air screwdriver, 8mm socket, Hand drill, 15/64" (6mm) drill bit, Torque wrench, 13mm socket

(Estimated time to complete: 1 hour)

PREPARATION:

(Refer to FIG. 1)

FOR SAFETY: Before leaving or servicing machine, stop on level surface and set parking brake. Then turn off machine and remove key.

INSTALLATION:

(Refer to FIG. 1)

1. Unlatch and open the hopper cover.
2. Mount the brace mounting bracket (2) loosely to the end of the plenum brace (1), using two hex screws (3) and flat washers (4). Do not tighten the hardware at this time. (Refer to FIG. 1)
3. Hold the plenum brace (1) in mounting position. Using the plenum brace (1) as a template, mark and drill the four mounting holes in the hopper top with a hand drill and 15/64" (6mm) drill bit. (Refer to FIG. 1)
4. Mount the plenum brace (1) to the hopper cover with four pan screws (5), washers (6) and blue loctite. Tighten the screws to 16-20 ft lbs. (Refer to FIG. 1)
5. Tighten the hex screws (3) connecting the brace mounting bracket (2) to the plenum brace (1). Tighten the hardware to 16-20 ft lbs. (Refer to FIG. 1)
6. Close and latch the hopper cover.

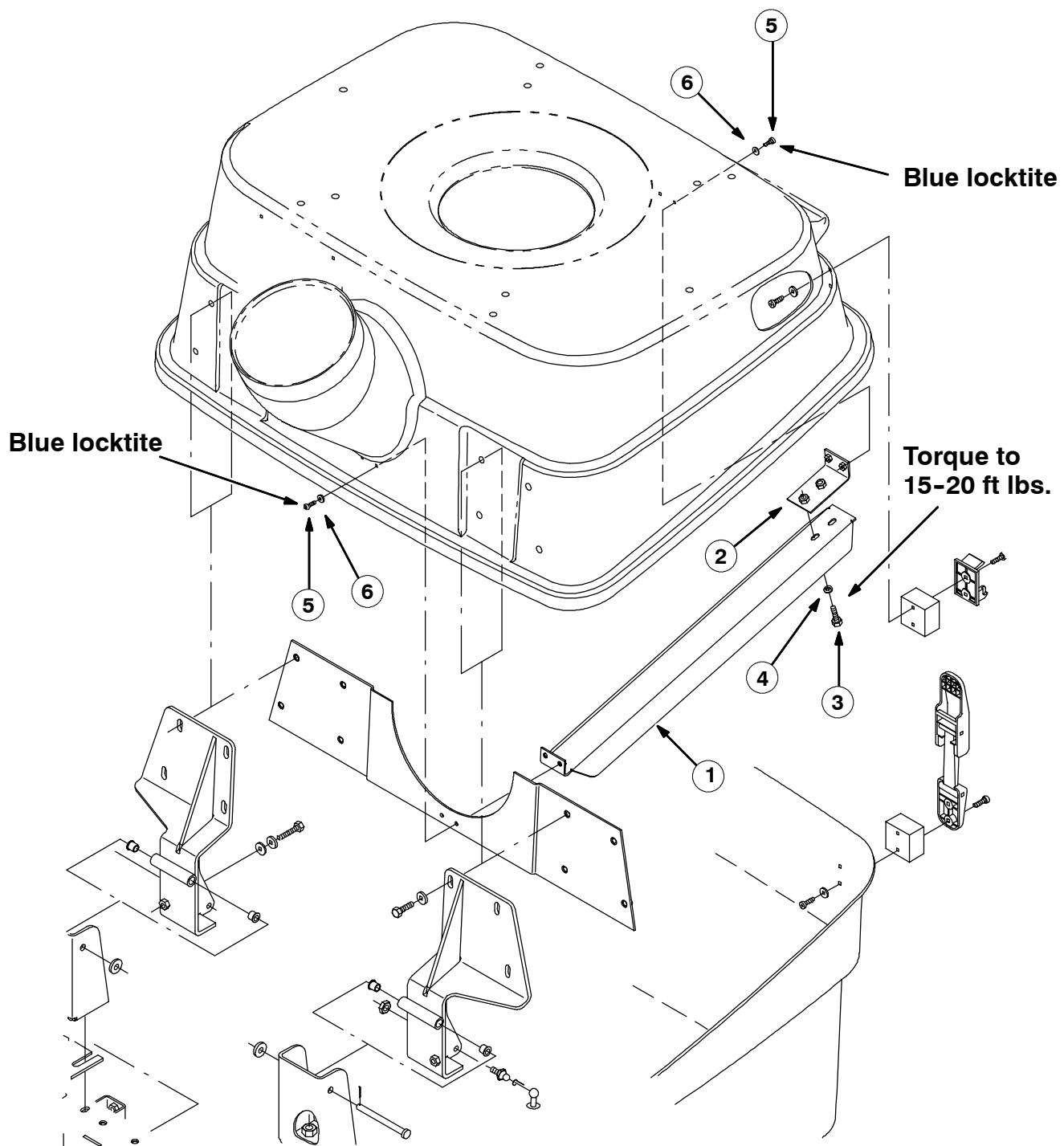


FIG. 1 - INSTALLATION, PLENUM BRACE KIT 368105

BILL OF MATERIALS FOR PLENUM BRACE KIT 368105

Ref.	TENNANT Part No.	Description	Qty.
1	368136	Bracket, brace, plenum	1
2	368048	Bracket, mtg, brace	1
3	09740	Screw, hex, M08 X 1.25 X 20, Ss	2
4	01685	Washer, flt, 0.31 Ss	2
5	24196	Screw, pan, M05 X 0.8 X 20, Ss	4
6	01683	Washer, flt, #10 Ss	4

TENNANT COMPANY
P. O. Box 1452
Minneapolis, MN 55440-1452